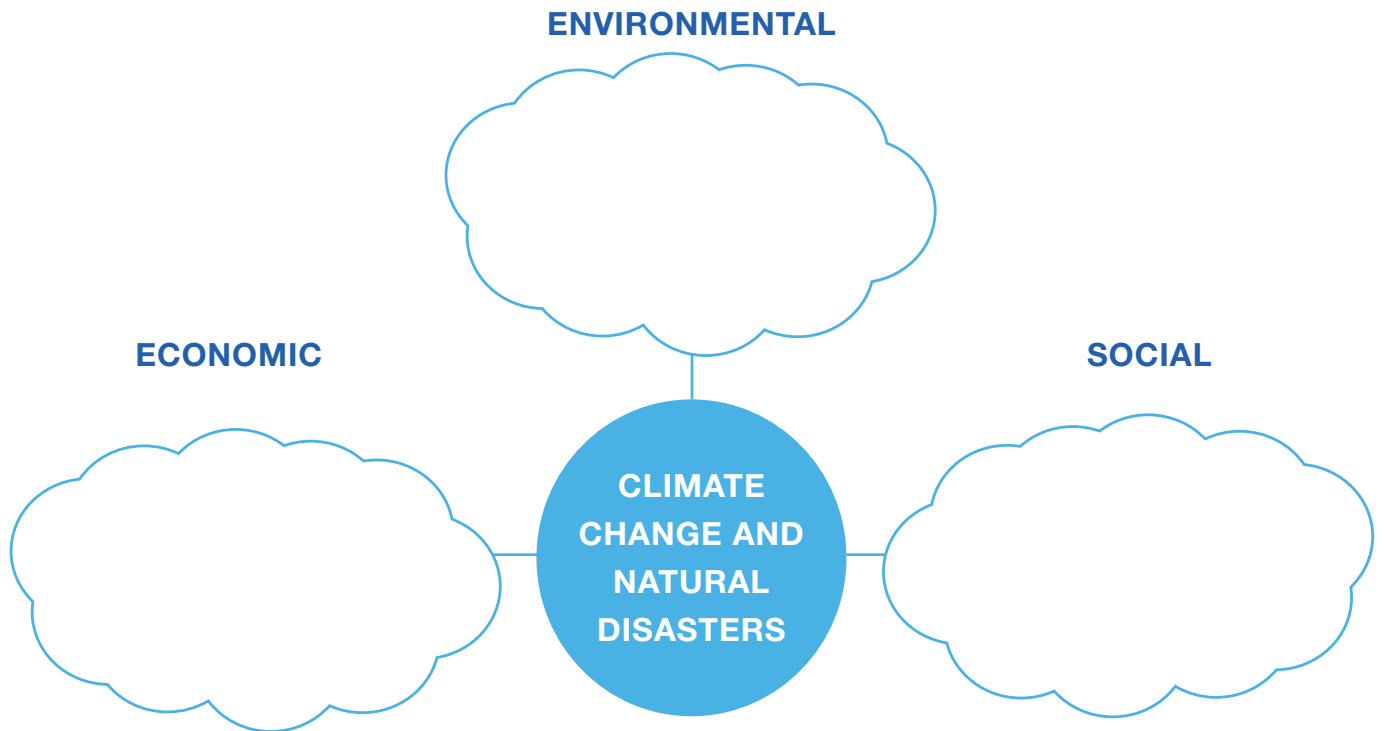


NAME:

# Climate Change / Environmental Refugees

Read through the 'Climate Change/Environmental Refugees' (page 27) section of the booklet. What are the environmental, economic and social impacts of natural disasters/climate change (these will not all be listed in the text)?



How do the things you listed above impact on the liveability of the places?

How are climate change or environmental refugees different from other types of refugees?

What are some ways that climate change and natural disasters have impacted on Australian towns/cities? What are some ways that they might be impacted in the future?

**NAME:**

## Climate Change / Environmental Refugees

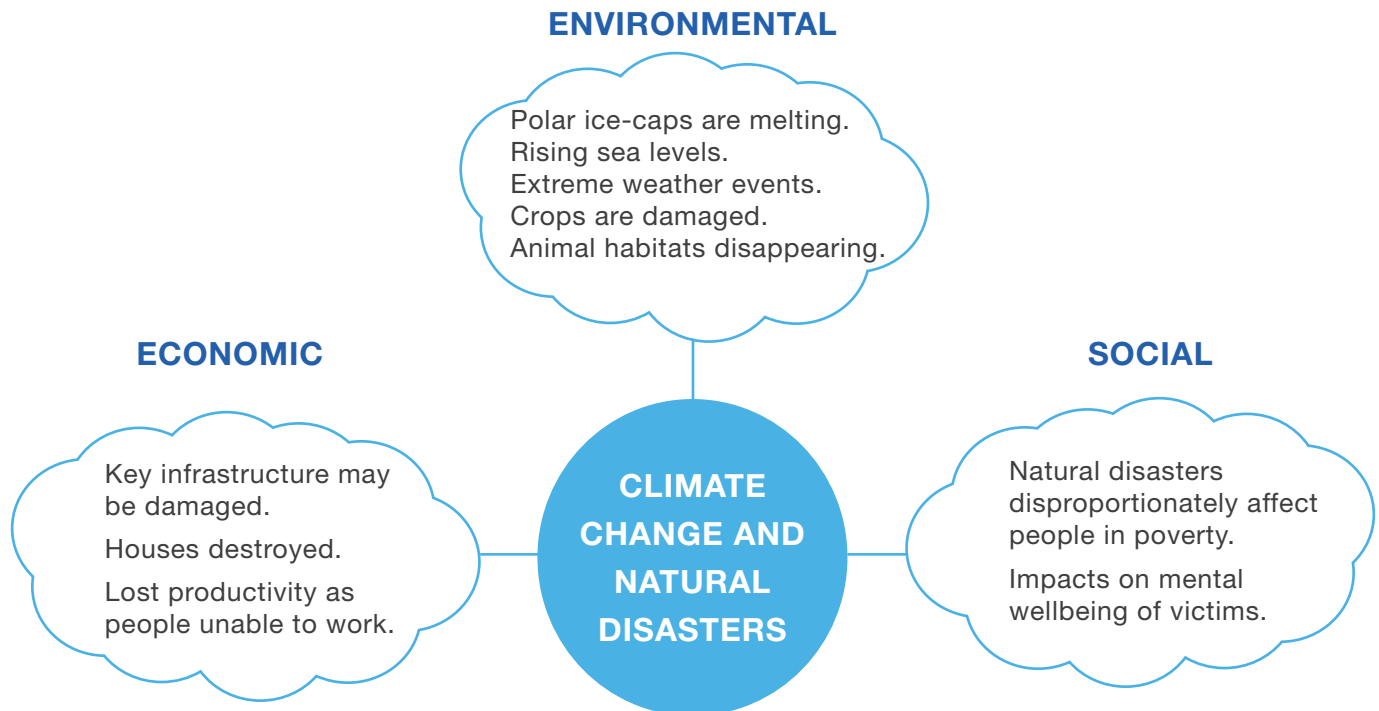
Research a recent example of a natural disaster that has occurred (one that is not mentioned in the fact book). Write the details of this disaster below, including facts such as:

- When and where the disaster occurred
- How many people were impacted
- The effects of the disaster on people and infrastructure
- Number of people who lost their homes
- Any other interesting information



# Teacher Guide – Climate Change / Environmental Refugees

Read through the ‘Climate Change/Environmental Refugees’(page 27) section of the booklet. What are the environmental, economic and social impacts of natural disasters/climate change (these will not all be listed in the text)?



## How do the things you listed above impact on the liveability of the places?

When key infrastructure and houses are destroyed in a city or town, government money must be spent on repairing the damages. This means government funding may be taken away from essential services, which impacts the liveability of the place. Environmental changes can impact on liveability as some places may become more vulnerable to extreme weather events. Those countries and communities who rely heavily on agriculture will be significantly impacted by climate change and natural disasters.

## How are climate change or environmental refugees different from other types of refugees?

Climate change or environmental refugees are different from other types of refugees as they are not recognised under the Refugee Convention. This is because they are not fleeing from persecution, however they are still forced to flee their homes due to the disaster.

# Teacher Guide – Climate Change / Environmental Refugees

What are some ways that climate change and natural disasters have impacted on Australian towns/cities? What are some ways that they might be impacted in the future?

The common types of natural disasters that impact Australia are floods, bushfires (not always natural) and cyclones. One of the most infamous natural disasters in Australia was the Black Saturday bushfires, which killed 173 people. As climate change continues, these natural disasters are likely to become more frequent and severe. There is also the threat of sea levels rising for coastal communities.

Research a recent example of a natural disaster that has occurred (one that is not mentioned in the fact book). Write the details of this disaster below, including facts such as:

- When and where the disaster occurred
- How many people were impacted
- The effects of the disaster on people and infrastructure
- Number of people who lost their homes
- Any other interesting information

Student responses will vary depending on which disaster was chosen.